



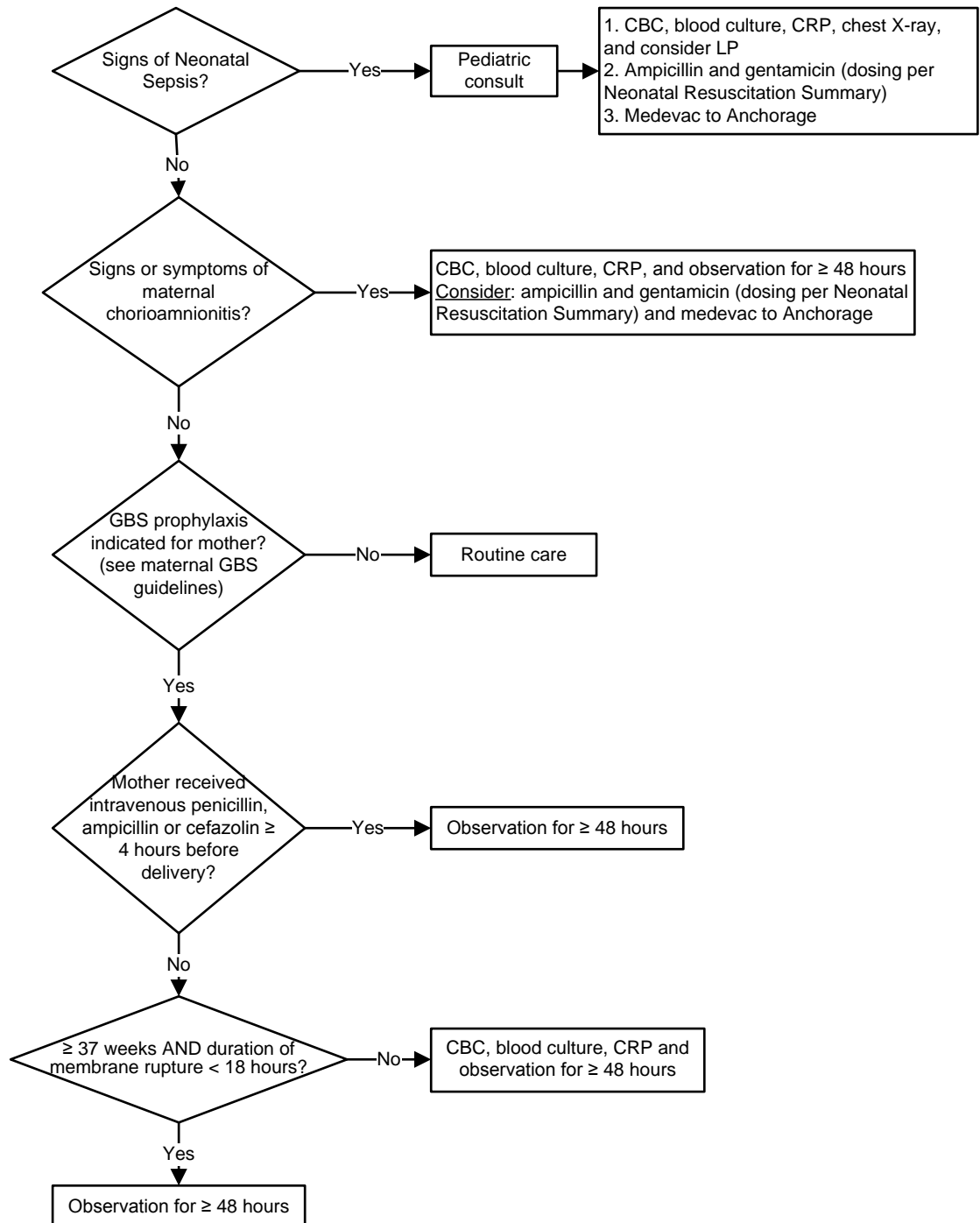
Signs of Neonatal Sepsis

- Temp ≥ 100.4
- Irritability
- Poor Feeding
- Hypoglycemia
- Hypothermia
- Tachypnea
- Tachycardia
- "not acting right"

Intrapartum Maternal GBS Risk Factors

- Chorioamnionitis
- Previous infant with invasive GBS disease
- GBS during current pregnancy
- GBS status unknown
- Labor at < 37 weeks gestation
- Rupture of membranes ≥ 18 hours
- Intrapartum temperature > 100.4
- GBS bacteriuria

Note: If mother receives "inadequate prophylaxis" (eg. clindamycin, vancomycin, or erythromycin) for GBS status, provider may consider a limited work up of the neonate



This guideline is designed for the general use of most patients but may need to be adapted to meet the special needs of a specific patient as determined by the medical practitioner.

Approved by MSEC 9/21/17.

If comments about this guideline, please contact Jennifer_Prince3@ykhc.org.